

Mystery Quilt

'Millefiori' with Sarah Fielke



Hello and welcome to my new Mystery Quilt program for Spotlight!

If you played along with our On the Pond BOM, welcome back- and if you're new to the program I hope you have a fantastic time sewing along with us

A little housekeeping before we start to sew. The first pattern will be delivered to you next week

*This quilt will be delivered to you in 12 free PDF patterns over 12 weeks via the Spotlight Facebook page, and the Spotlight website – <https://www.facebook.com/Spotlightstores>

All the patterns will stay live on both pages in case you miss a week.

*Don't forget to share your progress on Millefiori Facebook page, which is also the best place to ask questions and get help with the quilt quickly and easily: <https://www.facebook.com/millefioriquilt>

*Millefiori Fabrics are exclusive to Spotlight in Australia, New Zealand and Singapore. If you are unable to get a specific fabric at your local Spotlight you can use the Shop@Home tool through the Spotlight website. Customers outside these countries can purchase the fabric range directly from my website

*This quilt is a Mystery, and so no - I won't send you a picture of the finished quilt no matter how many times you ask! That's all part of the fun :) This quilt finishes at 80", which is around 2m square, so it is suitable for a large single bed, a double bed or a large throw. If you want to make it larger at the end you can always add an extra 8" border all around and it will finish at Queen sized.

*All the seams in this quilt should be sewn at an accurate 1/4".

*When I refer to strips being cut from the "width of the fabric", I mean from selvedge to fold. Do not cut the selvedge off the fabric first – always cut the full strip from the width, and THEN trim the selvedge off that strip before you crosscut.

*Ok, now nobody freak out. This quilt contains appliqué! If you have never done any appliqué before and are concerned, video information on my technique can be found in my Craftsy class (Big Techniques From Small Scraps) at www.craftsy.com – or there are a range of tutorials available online or from your local library. I love hand needleturn and find it relaxing and easy, give it a go using my technique before you decide it's too hard! If you like, you can use fusible hand appliqué instead. Please note that I have not included instructions for machine appliqué, but there are many tutorials online you can refer to for that method if you prefer.

Sarah xx



The information on this project sheet is presented in good faith, but no warranty is given, nor results guaranteed. Quantities and selections may vary at each store. Spotlight cannot guarantee results. Copyright Spotlight 2013

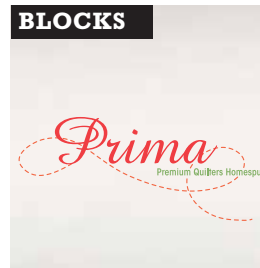
AUSTRALIA spotlight.com.au or call 1300 305 405 NEW ZEALAND spotlight.co.nz or call 0800 276 222 SINGAPORE spotlight.com.sg or call 6733 9808.

SPOTLIGHT

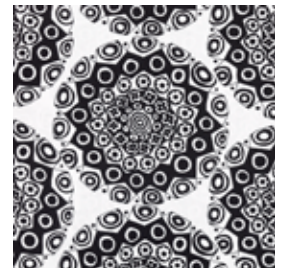
Material Requirements- whole quilt

The material requirements are generous, and they are that way for a reason. If you make a mistake or decide to use more of one fabric than another you will still have enough fabric to continue with the quilt.

All prints shown are from the Millefiori Range, available at Spotlight



2.8m
Prima Homespun, White



75cm
All over Black & White



70cm
Circle, Multi



70cm
Patch, Pink



70cm
Patch, Aqua



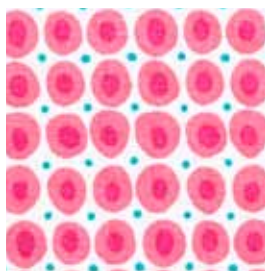
50cm
Patch, Yellow



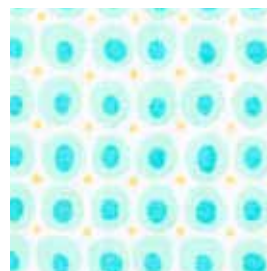
35cm
Heart, Pink



35cm
Heart, Aqua



25cm
Spot, Pink



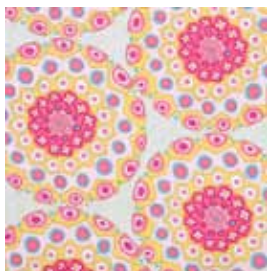
25cm
Spot, Aqua



25cm
Twist, Pink



25cm
Twist, Grey



15cm
All Over, Pink



15cm
All Over, Aqua



15cm
Daisy, Grey



15cm
Daisy, Pink



15cm
Heart, Yellow

You will also need:

- One sheet of template plastic
- A sheet of thin, sturdy cardboard or a cereal box

For needleturn appliqué:

- Applique glue – I prefer liquid appliqué glue, which you can buy from my website (www.sarahfielke.com). You can use a glue stick instead.
- very fine appliqué needles
- roll of regular kitchen foil

OR

For fusible appliqué:

- 1m fusible webbing such as Vliesofix
- Scissors for paper & fabric
- Threads to match your appliqué fabrics – always use 100% cotton threads. For hand needleturn and machine appliqué use Gütermann cotton thread, for hand blanket stitch use Gütermann Hand Quilting thread..

Note – If you are using fusible webbing please buy a fabric that is slightly thicker rather than finer, or you will be able to see the print you are appliquéing onto through the white fabric.



4.4m
Patch, Yellow



70cm
Heart, Aqua

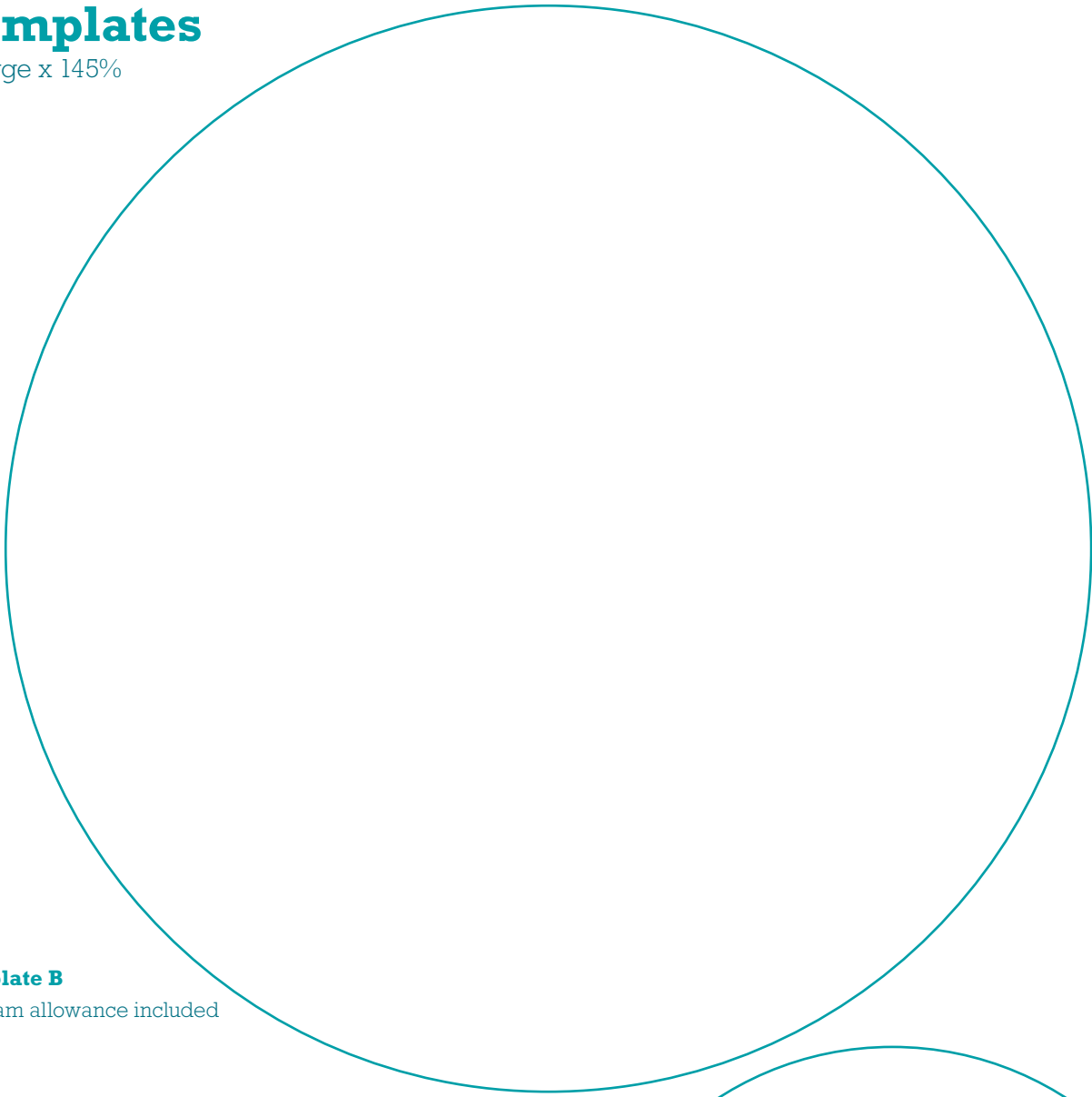
The information on this project sheet is presented in good faith, but no warranty is given, nor results guaranteed. Quantities and selections may vary at each store. Spotlight cannot guarantee results. Copyright Spotlight 2013

AUSTRALIA spotlight.com.au or call 1300 305 405 NEW ZEALAND spotlight.co.nz or call 0800 276 222 SINGAPORE spotlight.com.sg or call 6733 9808.

SPOTLIGHT

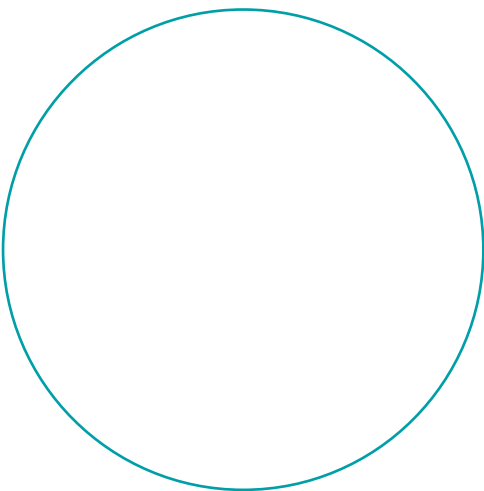
Templates

Enlarge x 145%



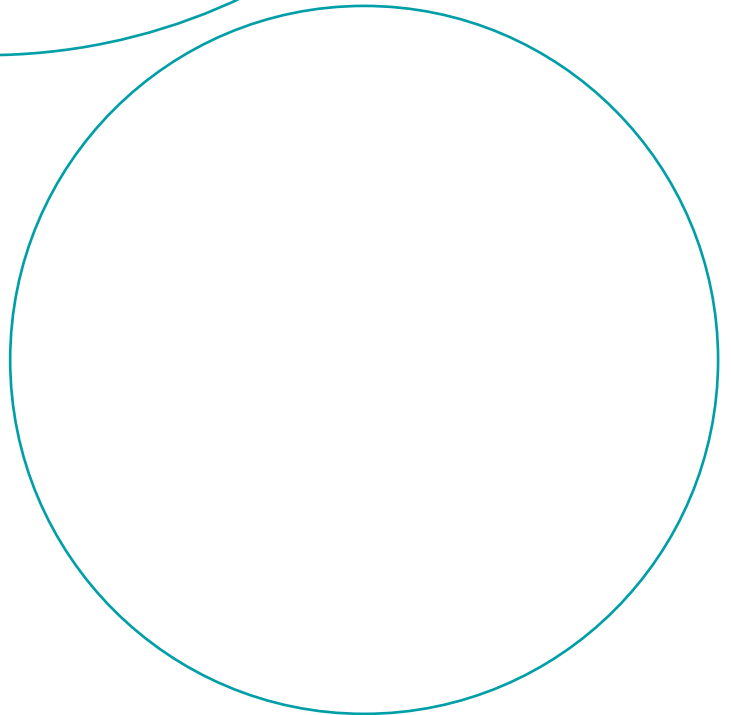
Template B

No seam allowance included



Template A

No seam allowance included



Template C

No seam allowance included

The information on this project sheet is presented in good faith, but no warranty is given, nor results guaranteed. Quantities and selections may vary at each store. Spotlight cannot guarantee results. Copyright Spotlight 2013

AUSTRALIA spotlight.com.au or call 1300 305 405 NEW ZEALAND spotlight.co.nz or call 0800 276 222 SINGAPORE spotlight.com.sg or call 6733 9808.

SPOTLIGHT